



HYMAX[®] REDUCER

(40mm - 300mm)

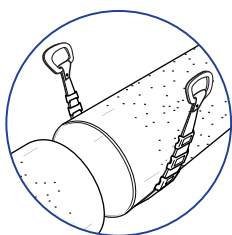
INSTALLATION INSTRUCTIONS

DO NOT DISASSEMBLE THE COUPLING. DO NOT LUBRICATE THE BOLTS.

GENERAL INSTRUCTIONS:

THE HYMAX REDUCER IS A STAB-ON TYPE COUPLING.

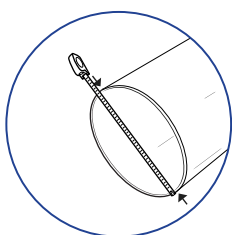
STEP 1



Prepare both pipe ends of the existing pipe by descaling if required. Clean the pipe as required using water. Make sure that the pipe is clear from debris and defects that may interfere with the HYMAX Reducer's proper seal.

NOTE: Except steel, PVC, and PE pipes, all rough-surfaced pipes must be lubricated with a water-based gasket lubricant in order to achieve a proper seal.

STEP 2



Measure both pipes' outer diameters and make sure the Reducer's size will fit the pipes properly on both sides which are different in diameter.

NOTE: Each coupling's size range is shown on the product's label. Ensure that the pipes are not out of round and free of scratches, dents, flats or other defects which may interfere with the reducer's proper seal. The reducer may not fit well or function properly on pipe which is out of round or damaged.

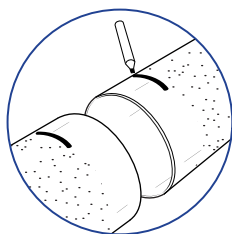
STEP 3

Unpack the HYMAX Reducer. Carefully remove the HYMAX Reducer from its packaging. Inspect the HYMAX Reducer, if the end rings are not centered on the coupling do not use! Contact your distributor for return and replacement!

NOTE: The HYMAX Reducer is a stab on coupling. Do not remove the end ring bolts.

NOTE: Bolts are pre-lubricated with a MAG (Molecular Anti Galling) dry coating. Do not lubricate the bolts and nuts. Greasing or lubricating bolts or nuts voids manufacturer's warranty.

STEP 4



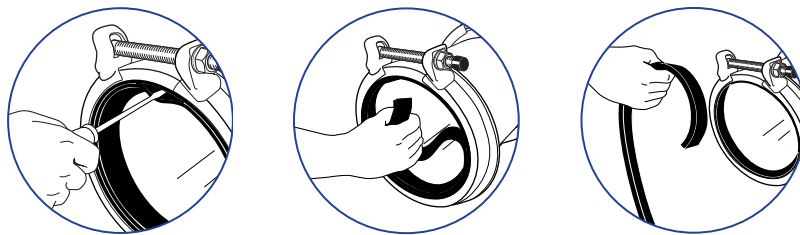
Mark each pipe end to a minimum required stab depth. This mark indicates the required stab depth for the HYMAX Reducer.

NOTE: Minimum Stab Depth - 55mm.

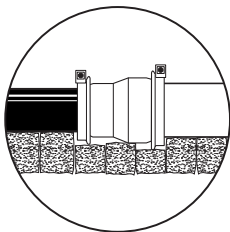
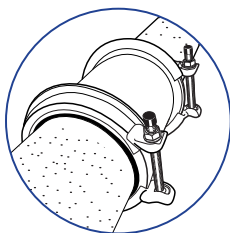
STEP 5

The coupling's gasket system has two layers, a removable inner gasket and a hydraulically assisted outer gasket. The inner gasket can be removed to accommodate larger OD pipes. DO NOT remove the inner gasket unless the OD falls within the upper range of the coupling. The proper range sizes are shown on the product label. If the inner layer of the gasket must be removed, fold the inner layer, then break the parting line by inserting a screwdriver and pulling the gasket out of the coupling.

NOTE: Measure the OD of the pipe TWICE using an OD tape! Once the inner gasket is removed it can NOT be re-installed!



STEP 6

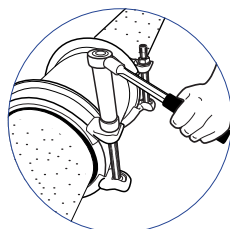


Position the coupling for installation. Make sure that the different product diameters fit the different pipes. Place the coupling on the pipe with top-facing bolts. Slide the coupling so that it covers the marks made in step 4. Make sure that the pipes are not touching inside the body of the HYMAX. There must be space between the pipes in order for continuous dynamic deflection (CDD) to take place. Make sure that the pipes are properly supported.

NOTE: The HYMAX Reducer is not designed to carry the weight of the pipes by itself. For uncoated ductile iron, grey cast iron and asbestos cement pipe surfaces - appropriate water-based gasket lubricant is required on both gaskets inner surface and pipe's outer surface. Do not lubricate PVC, steel or any PE pipe surfaces.

DO NOT LUBRICATE BOLTS!

STEP 7

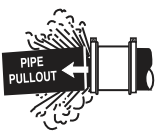



Tighten the end rings. Tighten the coupling bolts to the right torque shown on the product's label. When you finish, re-check the torque again.

NOTE: Use of a torque wrench to tighten the bolts is required. A torque wrench will assure a proper torque has been applied to the coupling. Do not use other tools to tighten the coupling's bolts!

STEP 8

Recharge the line and check for leaks. If any leakage is evident, reduce the pressure in the line and increase bolt's torque up to 50%. Verify again there are no leaks along the seal.

| | |
|-------------------------------------------------------------------------------------|------------------------------------------------------------------------------------------------------------------------------------------------------------------------------------------------------------------------------------------------------------------------------------------------------|
|  | <p>WARNING</p> <p>This product does not restrain axial pipe movement. Proper anchorage of the pipe is required if this product is used as a coupling. Failure to anchor the pipe ends could result in the escape of line content, and may cause property damage, serious injury or death.</p> |
|-------------------------------------------------------------------------------------|------------------------------------------------------------------------------------------------------------------------------------------------------------------------------------------------------------------------------------------------------------------------------------------------------|

| | |
|--------------------------------------------------------------------------------------|-------------------------------------------------------------------------------------------------------------------------------------------------------------------------------------------------------------------------------------------------------|
|  | <p>WARNING</p> <p>Caution: This product is not intended for use on natural gas piping, or any other type of gas piping. To do so could result in escaping gas that could ignite and cause property damage, serious injury or death.</p> |
|--------------------------------------------------------------------------------------|-------------------------------------------------------------------------------------------------------------------------------------------------------------------------------------------------------------------------------------------------------|

Krausz Industries Ltd.

6 Hapatish St. Tel Aviv, Israel 6655906 | Tel: +972 (0)3 5154000 | Fax: +972 (0)3 5183293
Info@krausz.com | www.krausz.com

HYMAX® is a registered trademark of Krausz Industries Ltd.