

KRAUSZ®

a MUELLER brand

EZ-MAX Wide-range Clamp

(DN40-DN600)

WIDTH 150-600

NO. OF BOLTS 2-16

INSTALLATION INSTRUCTIONS



DETECT



MONITOR



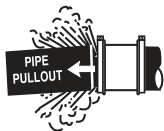
CONTROL



REPAIR

MUELLER

WARNING



This product does not restrain axial pipe movement. Proper anchorage of the pipe is required if this product is used as a coupling. Failure to anchor the pipe ends could result in the escape of line content, and may cause property damage, serious injury or death.



Caution: This product is not intended for use on natural gas piping, or any other type of gas piping. To do so could result in escaping gas that could ignite and cause property damage, serious injury or death.

IMPORTANT

- **THE EZ-MAX CLAMP** is a flat gasket repair clamp that repairs holes and longitudinal cracks along the pipe. Do not disassemble the product.
- **LUBRICATION OF CLAMP.** All pipes must be lubricated with a water-based gasket lubricant in order to achieve a proper seal.
- **DO NO LUBRICATE BOLTS AND NUTS.** Bolts are pre-lubricated with a MAG (Molecular anti-galling) coating. Greasing bolts or nuts voids manufacturer's warranty.
- **USE TORQUE WRENCH TO TIGHTEN THE BOLTS.** A torque wrench will assure a proper torque has been applied to the CLAMP. Do not use other tools to tighten the Clamp's bolts!

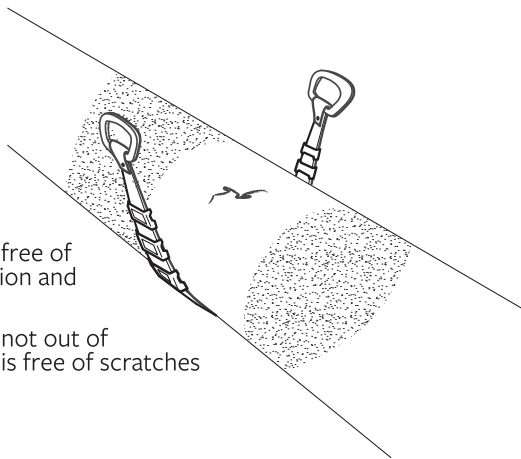
PREPARE PRODUCT AND PIPE FOR INSTALLATION:

1

CLEAN AND DESCALE THE PIPE

Make sure that:

- The pipe is free of dirt, corrosion and debris.
- The pipe is not out of round, and is free of scratches or defects.



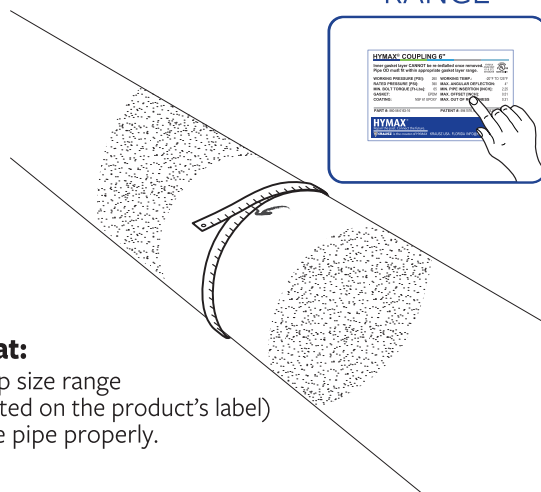
2

MEASURE THE PIPES' OD TWICE

RANGE

Make sure that:

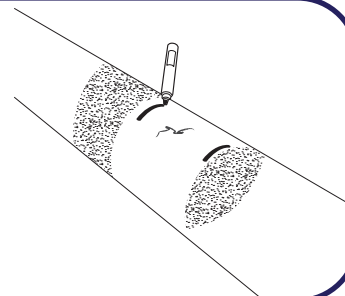
the Clamp size range (as indicated on the product's label) will fit the pipe properly.



3

MARK THE PIPE

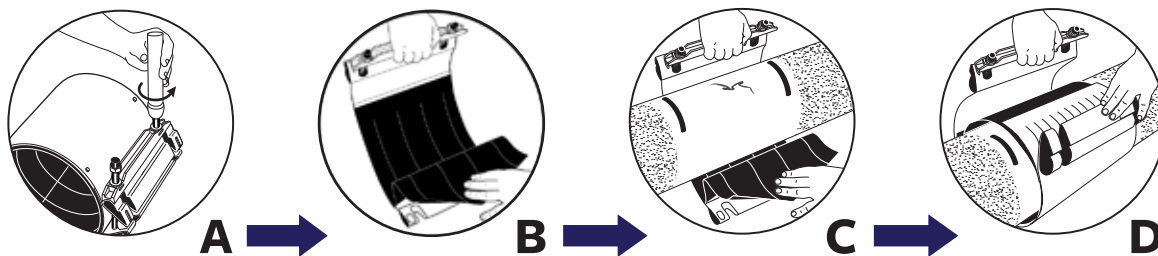
Mark the pipe an even distance from the break or leak, according to the length of the Clamp.



INSTALLATION OF THE CLAMP:

4

LOOSEN THE EZ-MAX CLAMP NUTS BUT DO NOT DISASSEMBLE



- (A) Loosen the bolts.
- (B) Grasp the side compression beam, and unlatch it from the lug
- (C) Open up the clamp fully while positioning it over the leak
- (D) Wrap the Clamp around the pipe

5

CENTER THE EZ-MAX CLAMP OVER THE INSTALLATION AREA

Fully wrap the clamp around the pipe.

Once the product is positioned around the pipe, re-engage the side compression beam over the lug assembly by pushing it downward until it clicks in place **ONCE** - see Click 1 in step 6.

After the first click you can still slide the product over the pipe to its final position.

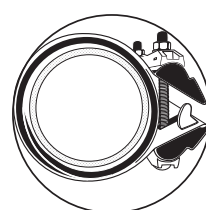
Make sure that the tapered end of the gasket is on the surface of the pipe and is smoothly positioned in place.

6

FINAL LOCATION OF PRODUCT



CLICK 1



CLICK 2

Push down the side compression beam over the lug assembly to its second final position to create a 2nd click.

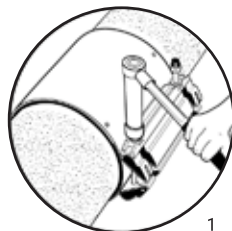
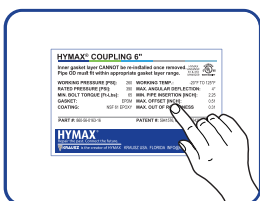
Note: Make sure you hear 2 clicks!

7

TIGHTEN

Tighten all nuts, working from the center of the lug outward. Re-check that proper torque has been reached (drawing 1) as specified on the product label. Make sure the alignment teeth are fully engaged in the slots on the opposite lug (drawing 2).

TORQUE



8

RECHARGE

Recharge the line and check for leaks. If any leakage is evident, reduce the pressure in the line and increase bolt torque up to 20%. Verify again there are no leaks along with the seal.

KRAUSZ®

a **MUELLER** brand

1 Harav Mantzura Str. Rosh Haayin, Israel 4850001
Tel: +972 (0)3 5154000 | Fax: +972 (0)3 5183293
Info@krausz.com | www.krausz.com

To Learn More, visit www.krausz.com

Mueller refers to one or more of Mueller Water Products, Inc., a Delaware corporation ("MWP"), and its subsidiaries. MWP and each of its subsidiaries are legally separate and independent entities when providing products and services. MWP does not provide products or services to third parties. MWP and each of its subsidiaries are liable only for their own acts and omissions and not those of each other. Mueller brands include Mueller®, Echologics®, Hydro Gate®, Hydro-Guard®, HYMAX®, izO®, Jones®, Krausz®, Mi.Net®, Milliken®, Pratt®, Pratt Industrial®, Singer®, and U.S. Pipe Valve & Hydrant. Please see muellerwp.com/brands to learn more

© 2021 Mueller Co., LLC. All Rights Reserved. The trademarks, logos and service marks displayed in this document are the property of Mueller Co., LLC., its affiliates or other third parties. Products above marked with a section symbol (§) are subject to patents or patent applications. For details, visit www.mwppat.com. These products are intended for use in potable water applications. Please contact your Mueller Sales or Customer Service Representative concerning any other application(s).

II0225 REV B 03/2022

