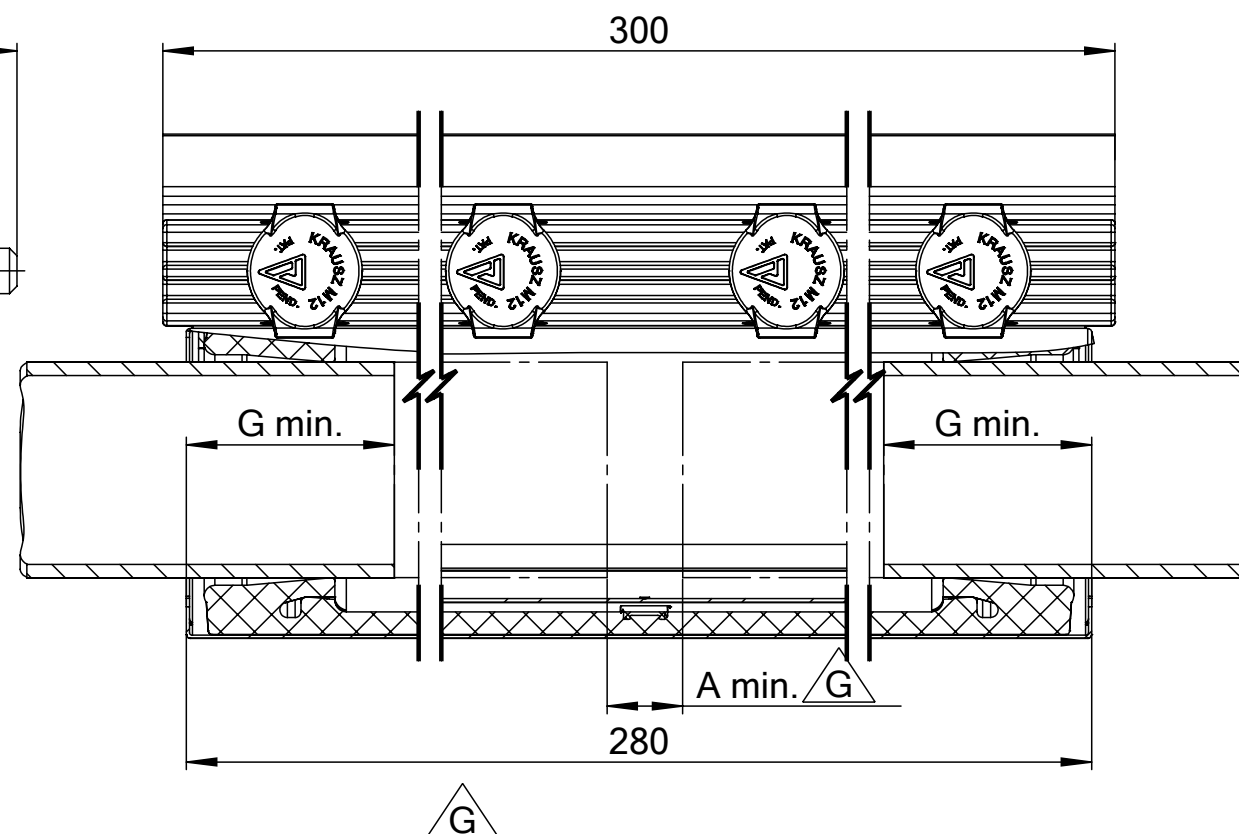
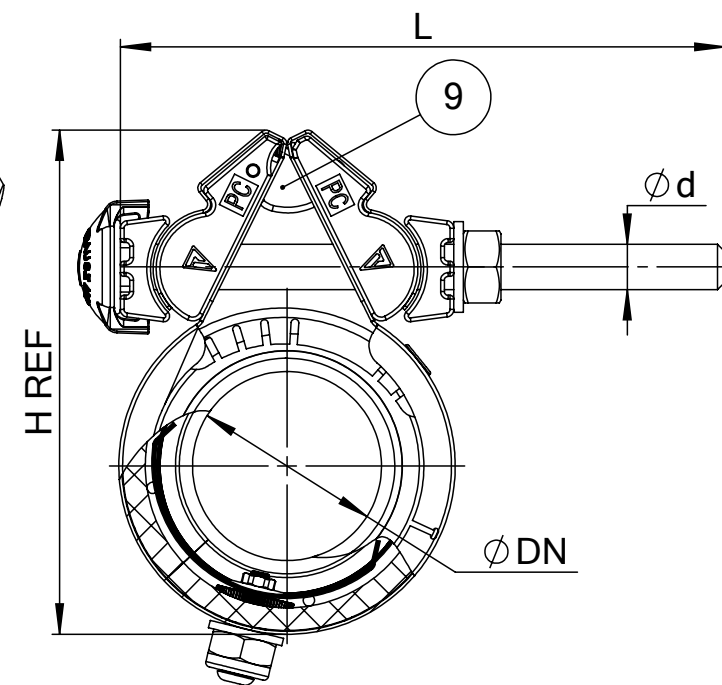


Material information

- 1.Body - Stainless Steel DIN 1.4301 AISI 304.
- 2.Pressure Assisted Gasket - EPDM compounded for water and sewerage, meets international standards for contact with drinking water.
-Working Temperature:
For continuous operations : -30 °C up to +85 °C
For short time operations : up to 100 °C
- 3.Gasket Bridge - AISI 304 stainless steel.
- 4.Inner plate - AISI 304 stainless steel .
- 5.Compression Beam - Casting AISI 304 (ASTM-A351-CF8).
- 6.Lugs - Polycarbonate.
- 7.Bolts & Nuts - AISI 304 stainless steel.
Rolled thread and anti galling coating.
8. Bolts - Reinforced special bolts manufactured of Ultem* Resin 1000 with insert Socket Set Screw AISI 316.
9. Adjusting Pin - Casting AISI 304 of ASTM-A351-CF8



| Krausz Part Number | DN (mm/in) | Overall Range (mm) | H (mm) | Bolts Length L (mm) | Bolts Qty.- Size d (mm) | Torque (Nm) | Body thickness (mm) | Approx Weight (Kg) |
|--------------------|------------|--------------------|--------|---------------------|-------------------------|-------------|---------------------|--------------------|
| 116-812-0045-24 | 40/1.5" | 45-57 | 125 | 160 | 4 -M12 | 50 | 1.0 | 4.1 |
| 116-812-0052-24 | 50/2" | 52-64 | 135 | 160 | 4 -M12 | 50 | 1.0 | 4.2 |
| 116-812-0059-24 | 50/2" | 59-71 | 140 | 160 | 4 -M12 | 50 | 1.0 | 4.4 |
| 116-812-0071-24 | 65/2.5" | 71-84 | 155 | 160 | 4 -M12 | 50 | 1.0 | 4.6 |
| 116-812-0081-24 | 70/3" | 81-93 | 165 | 160 | 4 -M12 | 50 | 1.0 | 4.7 |
| | 80/3" | | | | | | | |

| Product performance | |
|---|-------------|
| Dynamic deflection per side. | 3° |
| Transition capability | up to 4 mm |
| G - Min. Pipe Insertion | 55 mm |
| A min joint gap recommended | 20 mm |
| Maximum offset for misaligned pipe | up to 10 mm |
| Maximum out of roundness | 6 mm |
| Working Pressure | 24 atm. |
| Test Pressure | 36 atm. |
| Vacuum Test | 0.8 atm. |
| For long crack or hole: max. width of crack or hole | 205 mm |

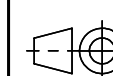
| | | | | | | |
|---|--------|---------------------------------|----------|--|----------------------------|--------------|
| Material: <div>See material information</div> | | Weight: <div>See table</div> | | Part Name: INS.Repamax 12/280 (1.5"-3") Pressure 24 atm. | | Scale 1:1 |
| UNLESS OTHERWISE SPECIFIED: DIMENSIONS ARE IN MILLIMETERS SURFACE FINISH: N7 GENERAL TOLERANCES: LINEAR: up to 50 = ±0.2 over 50 up to 100 = ±0.5 over 100 up to 500 = ±1.0 ANGULAR: ±0.5° HOLES: up to 10 = +0.2 / -0.05 over 10 = GEN. TOL. HOLES PLACES: ±0.05 | | Date | Name | Catalog No. SD116-812-02 | DO NOT SCALE DRAWING | |
| | Design | 07.02.2013 | Ryvzh | | | |
| | Check | 09.06.2015 | Galy B. | Drawing No. | | |
| | Appr. | 09.06.2015 | Tzah Gr. | SD116-812-02 | Sheet 1 of 1 | |

RELEASED

BREAK SHARP EDGES AND CORNERS, DEBURR



Confidential Information. All rights reserved to Krausz Industries Ltd. This document may not be copied, reproduced, displayed, modified or used in any way, whether in whole or in part, without the express prior written consent of Krausz Industries Ltd.



Size A3