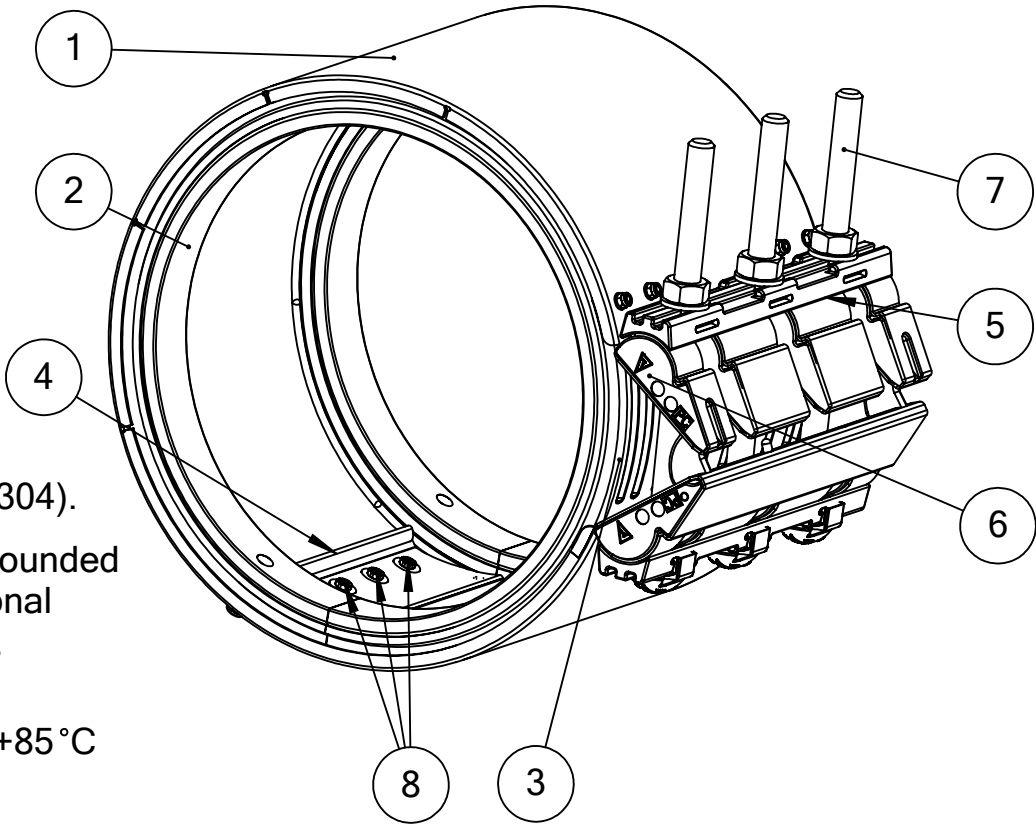
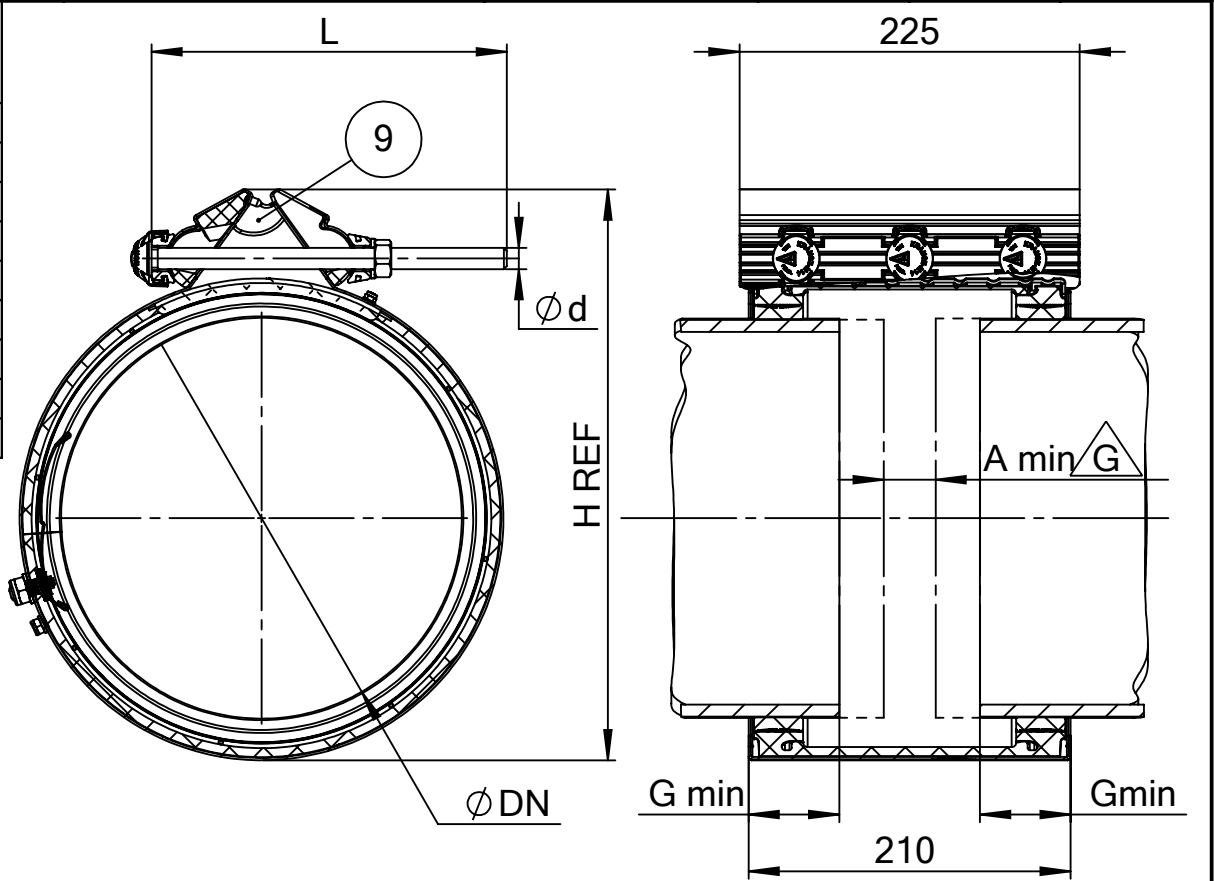


G										
Krausz Part Number	DN (mm/in)	Overall Range (mm)	Before removal the inner layer (mm)	After removal the inner layer (mm)	H (mm)	Bolts Qty.- Size d (mm)	Bolts Length L (mm)	Torque (Nm)	Body thickness (mm)	Approx Weight (Kg)
285-812-0163-12	150/6 O.S"	163-195	163-179	178-195	295	3-M14	210	80	1.2	6.9
285-812-0190-12	175/7"	190-222	190-206	205-222	325	3-M14	210	80	1.2	7.3
285-812-0217-12	200/8"	217-250	217-233	232-250	350	3-M14	210	80	1.2	7.8
285-812-0248-12	225/9"	248-280	248-264	263-280	385	3-M14	235	90	1.5	8.7
285-812-0272-12	250/10"	272-305	272-289	288-305	410	3-M16	240	100	1.5	9.5
285-812-0278-12	250/10 O.S"	278-311	278-295	294-311	415	3-M16	240	100	1.5	9.6
285-812-0313-12	300/12"	313-347	313-331	330-347	460	3-M16	240	110	1.5	10.3
285-812-0320-12	300/12'	320-352	320-337	336-352	465	3-M16	240	110	1.5	10.4
285-812-0334-12	300/12 O.S"	334-366	334-350	349-366	475	3-M16	240	110	1.5	10.6


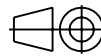
REVISIONS					
REV	DESCRIPTION	ECO	DRAWN	APPROVED	DATE
G	Add gap and body thickness	18000056	Galy B.	Tzah Gr.	27/05/2018



### Material information

- 1.Body - Stainless Steel DIN 1.4301 (AISI 304).
- 2.Pressure Assisted Gasket - EPDM compounded for water and sewerage, meets international standards for contact with drinking water.  
-Working Temperature:  
For continuous operations : -30°C up to +85°C  
For short time operations : up to 100°C
- 3.Gasket Bridge - AISI 304 stainless steel.
- 4.Inner plate - AISI 304 stainless steel .
- 5.Compression Beam - Casting AISI 304 (ASTM-A351-CF8).
- 6.Lugs - Polycarbonate.
- 7.Bolts & Nuts - AISI 304 stainless steel.  
Rolled thread and anti galling coating.
8. Bolts - Reinforced special bolts  
manufactured of Ultem\* Resin 1000  
with insert Socket Set Screw AISI 316.
9. Adjusting Pin - Casting AISI 304 ( ASTM-A351-CF8).

Product performance	
Dynamic deflection per side.	3°
Transition capability	up to 10 mm
G - min. Pipe Insertion	60 mm
A min joint gap recommended	OD ≤ 315mm 20 mm
	315mm<OD ≤ 400mm 25 mm
Maximum offset for misaligned pipe	up to 10 mm
Working Pressure	12 atm.
Test Pressure	18 atm.
Vacuum Test	0.8 atm.
Maximum out of roundness	8 mm
For long crack or hole: max. width of crack or hole	130 mm

Material:		Weight:		Part Name:		Scale
See material information		See table		INSULATED REPAMAX 32/210 (6"-12 ") Pressure 12 atm.		
UNLESS OTHERWISE SPECIFIED: DIMENSIONS ARE IN MILLIMETERS SURFACE FINISH: N7 GENERAL TOLERANCES: LINEAR :    0 - 50    - ±0.2 50 - 100 - ±0.5 100 - 500 - ±1.0 ANGULAR :    - ±0.5° HOLES : 0 - 10    - ±0.2/-0.05 HOLES : 10+    - GEN.TOL. HOLES PLACES : - ±0.05		Date	Name	Catalog No.	DO NOT SCALE DRAWING	
	Design	07.03.2013	Ryvzh	SD285-812-01		
	Check	09.06.2015	Galy B.	Drawing No.		SD285-812-01
	Appr.	09.06.2015	Tzah Gr.			
BREAK SHARP EDGES AND CORNERS, DEBURR	 KRAUSZ	Confidential Information. All rights reserved to Krausz Industries Ltd. This document may not be copied, reproduced, displayed, modified or used in any way, whether in whole or in part, without the express prior written consent of Krausz Industries Ltd.				Size A3

RELEASED