

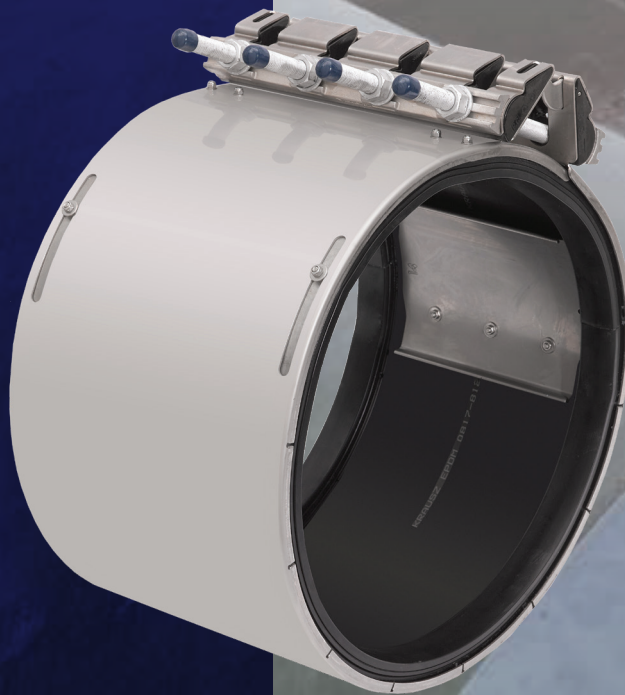
KRAUSZ[®]

a **MUELLER** brand

REPAMAX[®]

Stainless Steel Wide-Range Coupling

CONNECTS LIKE A CLAMP.
REPAIRS LIKE A COUPLING.



DETECT



MONITOR



CONTROL



REPAIR

MUELLER

REPAMAX[®] FEATURES

STAINLESS STEEL WIDE-RANGE COUPLING

The Repamax[®] coupling can join pipes with the same or different diameters, and repair holes and cracks. This multi-functionality, together with unique, extra-wide tolerance, enables smaller inventories, saving cost and shelf space.

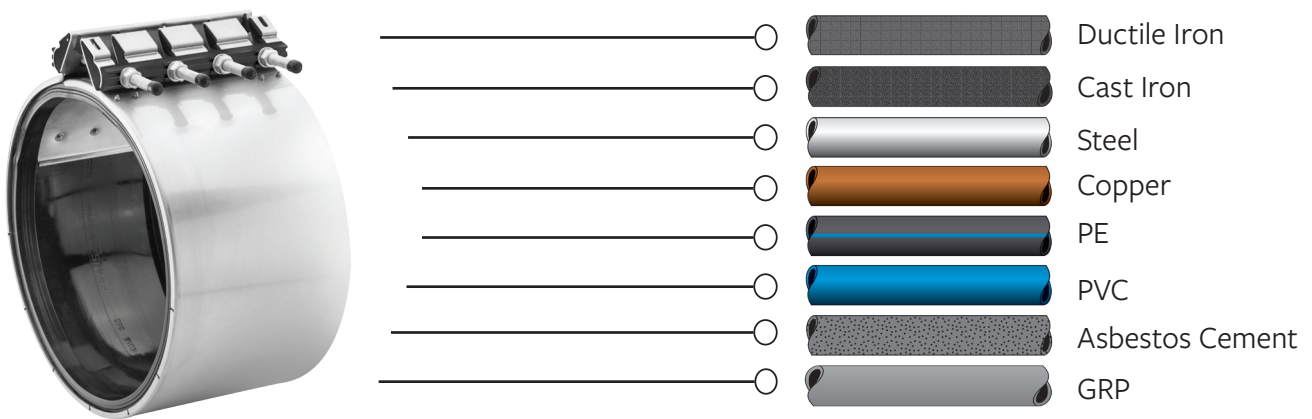


- | | |
|---|---|
| 1 Lugs
Polycarbonate For Regular Pressure.
EN 1.4301/SAE AISI 304 Stainless Steel
Casting (ASTM A-351-CF8) For High
Pressure Product Sizes | 5 Nuts & Bolts
Type EN 1.4301/SAE AISI 304 Stainless Steel.
Rolled Thread and Anti-Galling Coating |
| 2 Gasket Bridge
EN 1.4301/SAE AISI 304 Stainless Steel | 6 Compression Beam
Precision Casting Type
EN 1.4301/SAE AISI 304 Stainless Steel |
| 3 Inner Plate
EN 1.4301/SAE AISI 304 Stainless Steel | 7 Reinforced Bolts
ULTEM [™] Resin 1000 with Set Screw |
| 4 Gasket
EPDM compound for Water and Sewage | 8 Body
Type EN 1.4301/SAE AISI 304 Stainless Steel |

REPAMAX[®] FEATURES

STAINLESS STEEL WIDE-RANGE COUPLING

COMPATIBLE WITH THE FOLLOWING TYPES OF PIPE



The Repamax[®] product family provides a highly versatile stainless steel wrap-around coupling solution for connecting and repairing a wide range of applications.

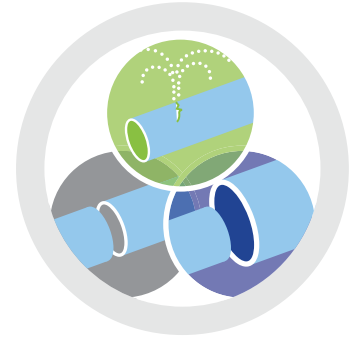
- Corrosive soil conditions
- High pressure configurations
- Conventional section replacement
- Misaligned pipes
- Shear breaks
- Socket Joint replacement
- Spigot Joint replacement

REPAMAX[®] BENEFITS

STAINLESS STEEL WIDE-RANGE COUPLING

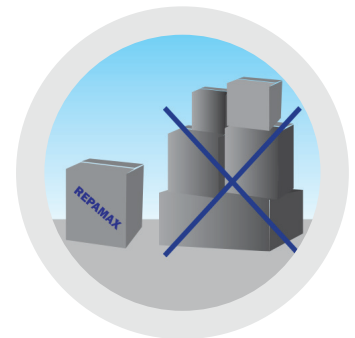
VERSATILE SOLUTION

- Multi-purpose stainless steel couplings that can be used for joining or repairing pipes
- Standard range covering nominal pipe sizes DN40 to DN2000 and product widths 140mm, 210mm, and 280mm
- Connect two pipes of different materials with a single product, allowing transition capability of up to 10mm
- Xtra range available in widths of 430mm and 580mm to bridge wide gaps between two pipes or repair large cracks - circumferential or longitudinal



SIMPLIFY AND REDUCE INVENTORY COSTS

- Being able to use as a Clamp or as a Coupling can reduce inventory – no need for separate Clamps or Couplings; Repamax can perform both functions
- Enables Repair Operatives to be more effective; one product can be used as a Clamp or as a Coupling



EXCEPTIONALLY DURABLE

- Stainless Steel coupling with weld-free construction
- Two stage sealing: initial mechanical seal during bolt-up which is reinforced by pressure (or vacuum) when the pipe is in service to increase sealing effectiveness
- Withstands aggressive soil conditions
- Innovative radial closing mechanism reduces the risk of installation errors
- Gasket and inner plate attached with insulated bolts to prevent galvanic corrosion when used on metal pipes

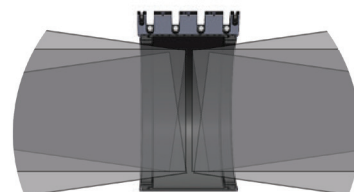


REPAMAX[®] BENEFITS

STAINLESS STEEL WIDE-RANGE COUPLING

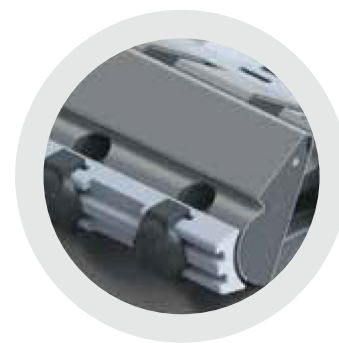
FLEXIBLE CONNECTION

- Repamax can provide up to 3° angular deflection at each end, which can cater for deflected or misaligned pipes
- After installation, this 3° angular deflection per end mitigates the potential for pipe or structure damage caused by ground movement due to temperature change or settlement
- Adapts to out-of-round pipe (up to 8mm)
- Patented pressure-assisted gasket increases sealing effectiveness as water pressure increases



EASY TO USE

- Unique patented bolt holder enables single-person installation
- Single closing mechanism up to DN700



REPAMAX[®] PRODUCT FAMILY

STAINLESS STEEL WIDE-RANGE COUPLING

	Working Range (mm)	DN	Width (mm)
REPAMAX[®] 12	12	40-80	140, 280



REPAMAX[®] 22	22	80-30 80-125	140, 210, 280
-------------------------------	----	-----------------	---------------



REPAMAX[®] 32	32	150-600	210, 280
-------------------------------	----	---------	----------



REPAMAX[®] 15*	15	650-1150	210
Made to Order	15	660-1800	280



REPAMAX[®] XTRA*	15	700-1950	430, 580
Made to order			



**Couplings DN700 and larger are equipped with two closure*

REPAMAX[®] TECHNICAL SPECIFICATIONS

STAINLESS STEEL WIDE-RANGE COUPLING

Body:

- EN1.4301/SAE AISI 304 Stainless Steel

Progressive Pressure-Assisted Gasket:

- EPDM compound for Water and Sewage, meets international standards for contact with Potable Water UBA Elastomer Guideline (KTW), W270, XP P 41-250, and BS 6920. Also meets DIN 681-1 for water and drainage applications
- NBR compounded (for ranges 10mm, 12mm, and 22mm), meets DIN EN 682 for gas supply mains and pipeline applications

Gasket Bridge:

- EN1.4301/SAE AISI 304 Stainless Steel

Inner Plate:

- EN1.4301/SAE AISI 304 Stainless Steel connected with reinforced insulated bolts made from Ultem resin 1000, with insert socket set screw AISI 316

Lugs:

- Polycarbonate for regular pressure products
- ASTM-A351-CF8, (Casting Type 304) for some high pressure products

Nuts & Bolts:

- EN1.4301/SAE AISI 304 Stainless Steel, Rolled Thread with anti-galling coating

Dynamic Deflection:

- Up to 3° per side

Max. Offset for Misaligned Pipe:

- Width 140mm - Up to 6mm
- Widths 210mm and 280mm - Up to 10mm
- Width 430mm and 580mm - Up to 10mm

Transition Capability:

- Up to 10mm

Working Range:

- 12mm range: DN40 - DN80
- 22mm range: DN80 - DN300
- 32mm range: DN150 - DN600
- 15mm range: DN650 - DN1950

PFA - Allowable Operating Pressure:

(valid for products with EPDM gasket)

Regular Working Pressure Products:

- DN40 - DN300: 16bar
- D350 - DN500: 12bar
- DN600: 11bar

High Working Pressure Products:

- DN40 - DN125: 24bar
- DN150 - DN600: 16bar
- DN650 - DN1950: For both regular and high working pressure information, please contact your local Krausz distributor. Refer to our website for contact information: www.krausz.com.

PEA - Allowable Test Pressure:

- 1.5 x Working Pressure

Working Temperature:

- Continuous Operation: EPDM gasket: -30°C up to +85°C NBR gasket: -20°C up to +70°C
- Short Term Operation: EPDM gasket: up to +100°C

Vacuum Test:

- 0.8bar

NOTE: Data may vary according to product size and type. For complete technical information please refer to product specification sheet.

ABOUT KRAUSZ®

KRAUSZ, a Mueller brand, develops, designs, and manufactures market-leading products for repairing and connecting different types of pipes for both potable water and sewage. In more than 160 years of combined industry leadership with Mueller, and millions of installations worldwide, KRAUSZ has earned solid reputations for providing innovative, high-quality products, that meet installers' field needs.

KRAUSZ offers a full line of solutions, including standard products that range from DN40 to DN2000 and custom-made products according to customers' requirements. The wide-range coupling introduced unprecedented ease of use, with a radial closing mechanism of only two to four top-facing bolts, enabling faster and safer installation.

Our company is built by industry experts with extensive field experience. Therefore, we can better understand the challenges of the installer and provide real solutions. The KRAUSZ product line saves costs by reducing inventory and providing long lasting value. Offering extreme durability and outstanding connection flexibility, these products prevent future pipe damage, delivering long-lasting value.

**Discover the Right Coupling for
your Repair and Installation Needs.
Scan the QR Code to Get Started**



For more information about us, or to view our full line of products, please visit www.mueller-international.com or call International Customer Service at:

UK: +44.1438.487410 Dubai: +971.4.214.6640 Singapore: +65.6816.3088 Israel: +972 (0)3 515 4000 International@muellerwp.com

Mueller refers to one or more of Mueller Water Products, Inc., a Delaware corporation ("MWP"), and its subsidiaries. MWP and each of its subsidiaries are legally separate and independent entities when providing products and services. MWP does not provide products or services to third parties. MWP and each of its subsidiaries are liable only for their own acts and omissions and not those of each other. MWP brands include Mueller®, Echologics®, Hydro Gate®, Hydro-Guard®, HYMAX®, iZO®, Jones®, Krausz®, Mi.Net®, Milliken®, Pratt®, Pratt Industrial®, Sentryx™, Singer®, and U.S. Pipe Valve & Hydrant. Please see muellerwp.com/brands and www.krausz.com to learn more.

© 2023 Mueller International Holdings. All Rights Reserved. The trademarks, logos and service marks displayed in this document are the property of Mueller, its affiliates or other third parties. Products above marked with a section symbol (§) are subject to patents or patent applications. For details, visit www.mwppat.com. These products are intended for use in potable water applications. Please contact your Mueller Sales or Customer Service Representative concerning any other application(s).