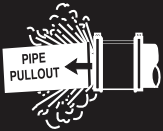


REPAMAX

(40mm-1800mm)



WARNING



THIS PRODUCT DOES NOT RESTRAIN AXIAL PIPE MOVEMENT. PROPER ANCHORAGE OF THE PIPE IS REQUIRED IF THIS PRODUCT IS USED AS A COUPLING. FAILURE TO ANCHOR THE PIPE ENDS COULD RESULT IN THE ESCAPE OF LINE CONTENT, AND MAY CAUSE PROPERTY DAMAGE, SERIOUS INJURY OR DEATH.



CAUTION: THIS PRODUCT IS NOT INTENDED FOR USE ON NATURAL GAS PIPING, OR ANY OTHER TYPE OF GAS PIPING. TO DO SO COULD RESULT IN ESCAPING GAS THAT COULD IGNITE AND CAUSE PROPERTY DAMAGE, SERIOUS INJURY OR DEATH.



IMPORTANT

THE REPAMAX WRAP-AROUND COUPLING may be used as a non-restraining stab type coupling or as a wrap around repair coupling. Do not disassemble the product.

LUBRICATION OF PRODUCT AND PIPE. Except steel, PVC, and PE pipes, all rough-surfaced pipes must be lubricated with a water-based lubricant in order to achieve a proper seal.

DO NO LUBRICATE BOLTS AND NUTS. Bolts are pre-lubricated with a MAG (Molecular anti-galling) coating. Greasing bolts or nuts voids manufacturer's warranty.

USE TORQUE WRENCH TO TIGHTEN THE BOLTS. A torque wrench will assure a proper torque has been applied to the REPAMAX. Do not use other tools to tighten the coupling's bolts!

TRANSITION CAPABILITY. The REPAMAX can transition between two pipe ends with a maximum outside diameter difference as indicated on the product label.

PREPARE PRODUCT AND PIPE FOR INSTALLATION:

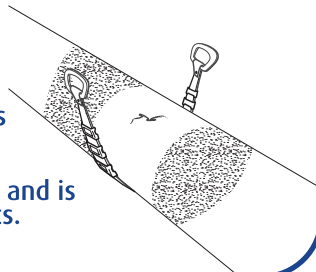
When REPAMAX is used as a wrap-around repair coupling.
(for connect function see page 4)

1

CLEAN AND DESCALE THE PIPE

Make sure that:

- The pipe is clear from debris and defects.
- The pipe is not out of round and is free of scratches, dents, flats.

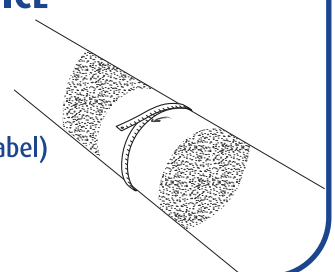


2

MEASURE THE PIPES' DIAMETER TWICE

Make sure that:

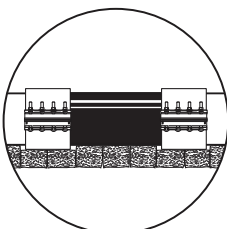
The product working range (as indicated on the product's label) will fit the pipe properly.



3

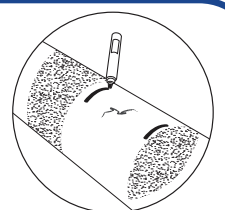
MARK THE PIPE

At an even distance from the break or leak, according to the length of the REPAMAX



Make sure that the pipe is properly supported.

NOTE: The REPAMAX is not designed to carry the weight of the pipe by itself.



INSTALLATION OF THE REPAMAX

4

REPAMAX SIZES AND GASKETS:

PRODUCT SIZE

GASKET TYPE

40-120 mm

Single gasket

150-600 mm

Two layer gasket

650-1800 mm

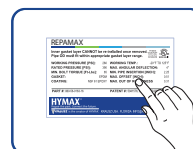
Single gasket

FOR SIZES 40-120 mm AND 650-1800 mm GO TO STAGE 5

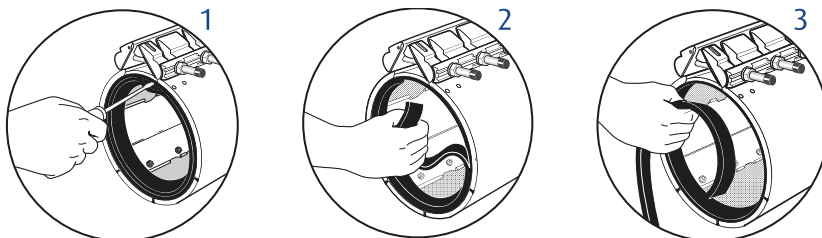
FOR SIZES 150-600 mm ONLY

The REPAMAX has two gaskets; a removable inner gasket and a hydraulically-assisted outer gasket. The inner gasket can be removed to accommodate larger diameter pipes.

DO NOT remove the inner gasket unless the DN falls within the upper range. The proper range sizes are shown on the product label.



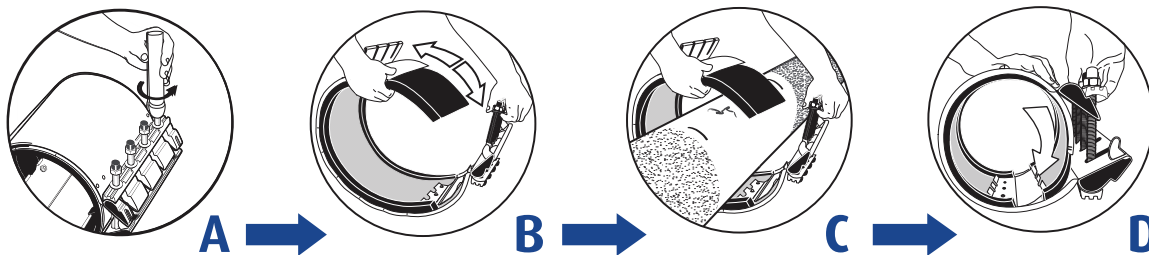
If the inner layer of the gasket must be removed fold the inner layer, break the parting line by inserting a screwdriver between the two layers, and pull the layer out.



If removal of the inner layer gasket is required, it must be removed from BOTH ENDS of the REPAMAX. Otherwise, the product might not seal properly and the product warranty is voided.

5

LOOSEN THE REPAMAX NUTS BUT DO NOT DISASSEMBLE COMPLETELY



(A) Loosen the bolts.

(B) Grasp the side compression beam, and unlatch it from the lug

(C) Open up the REPAMAX fully while positioning it over the leak

(D) Wrap the product around the pipe

6

CENTER THE REPAMAX OVER THE INSTALLATION AREA

Fully rotate the REPAMAX around the pipe by pulling the side compression beam over, underneath, and back around the pipe.

NOTE: : The REPAMAX has sufficient range to be assembled next to the damaged area and slide over the break as long as the pipe has been lubricated with a water-based lubricant.



7

FINAL LOCATION OF PRODUCT

Push down the side compression beam over the lug assembly to its second final position.

NOTE: Make sure you hear 2 clicks!

Make sure the tapered end of the gasket is on the surface of the pipe and is smoothly positioned in place.

