

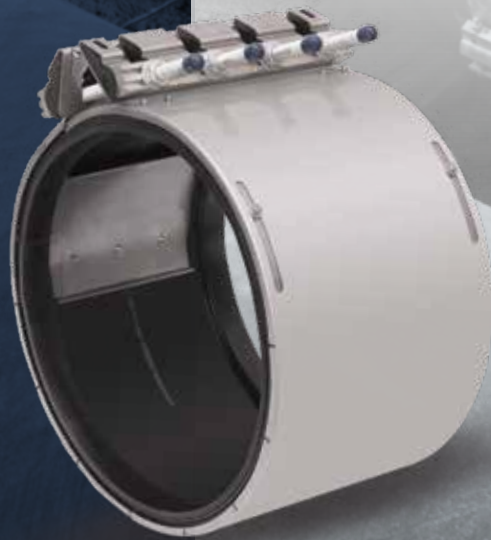
KRAUSZ[®]

a **MUELLER** brand

REPAMAX[®]

Versatile Stainless Steel
Wide-Range Couplings

**CONNECTS
LIKE A COUPLING
REPAIR LIKE
A CLAMP**



DETECT



MONITOR



CONTROL

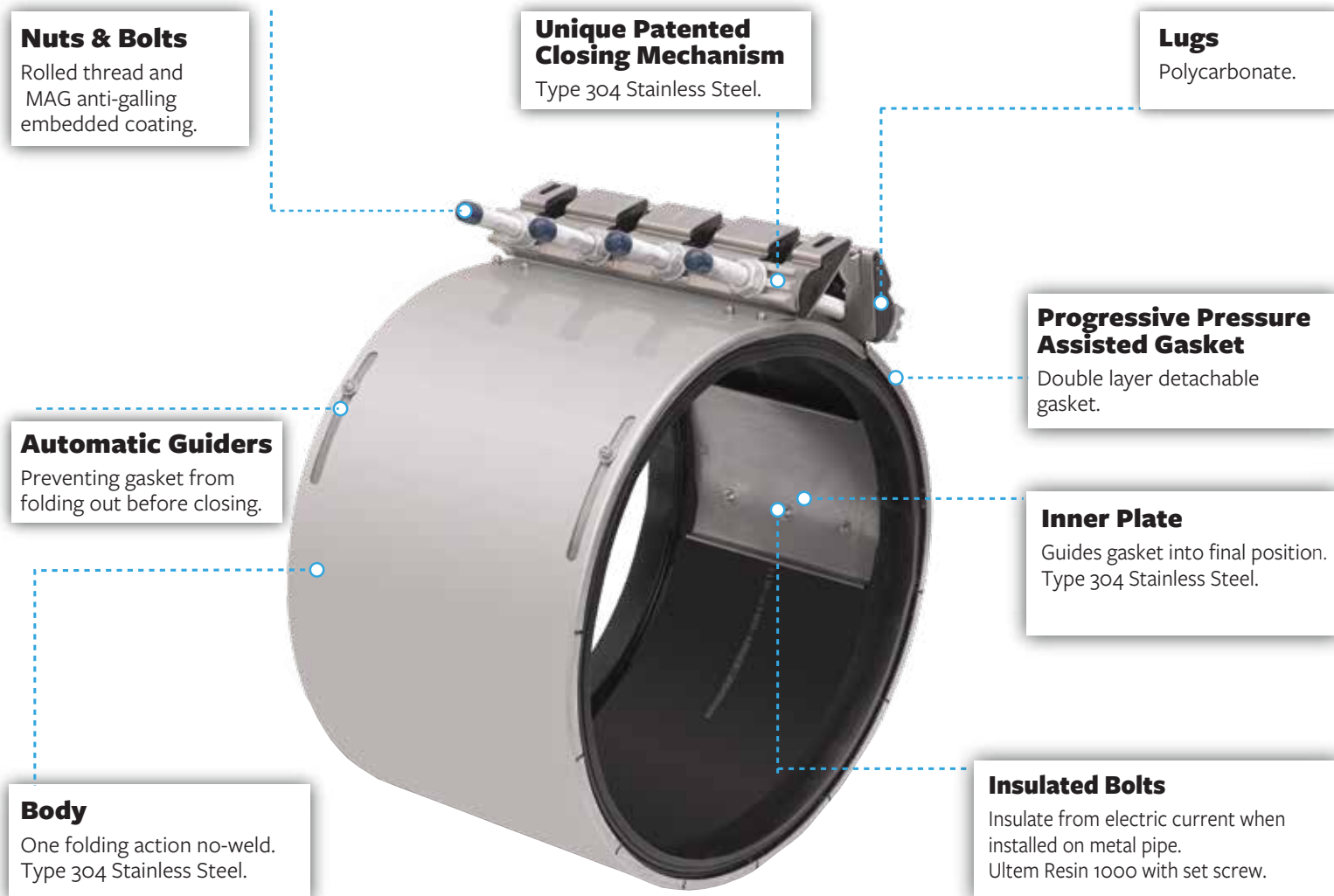


REPAIR

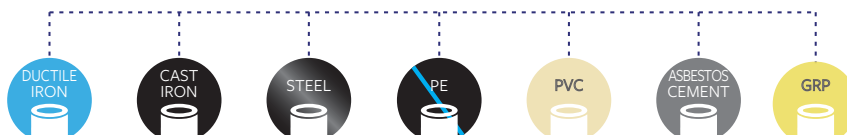
MUELLER

REPAMAX[®] PRODUCT INFORMATION

Versatile Stainless Steel Wide-Range Couplings



SUITABLE FOR THESE PIPE MATERIALS:



	Working Range (mm)	DN (mm)	Width (mm)
REPAMAX® 12	12	40-80	140, 280



REPAMAX® 22	22	80-300 80-400	140 210, 280
-------------	----	------------------	-----------------



REPAMAX® 32*	32	150-600	210, 280
--------------	----	---------	----------



REPAMAX® 15
Large Diameter**
Made to Order

15	650-1150	210
15	650-1800	280



15	700-2000	430, 580
----	----------	----------



* Not available with NBR gasket

** DN700 and larger equipped with two closing mechanism

REPAMAX[®] FAMILY FEATURES

Versatile Stainless Steel Wide-Range Couplings.

Krausz REPAMAX products provide a highly versatile stainless steel coupling solution for connecting and repairing a wide range of water and wastewater pipes. This family of products also stands out for its exceptional durability and flexibility and its best fit for aggressive soil conditions.

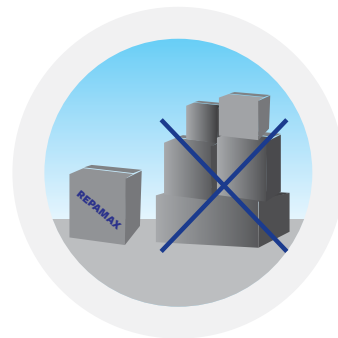
Highly versatile solution

- Multi-purpose stainless steel coupling that can be used for either joining or repairing pipes, reducing and simplifying inventory.
- Extensive portfolio of products with nominal pipe sizes from DN40 up to DN2000 and product widths of 140mm, 210mm and 280mm.
- Available with unique width of 430mm and 580mm to connect the widest gap between two pipe or repair large cracks - circumferential or longitudinal.
- One single product can connect pipes of two different materials, allowing transition capability of up to 10mm.



Reduces inventory costs

- Substantially reduces inventory costs and saves shelf space as products suit a wide range of pipe diameters, eliminating the need for two lines of products - dedicated wrap-around and coupling products.
- Mobile utility service teams can address most emergency needs while keeping only a small number of products on hand, reducing unplanned supply runs to and from the warehouse.



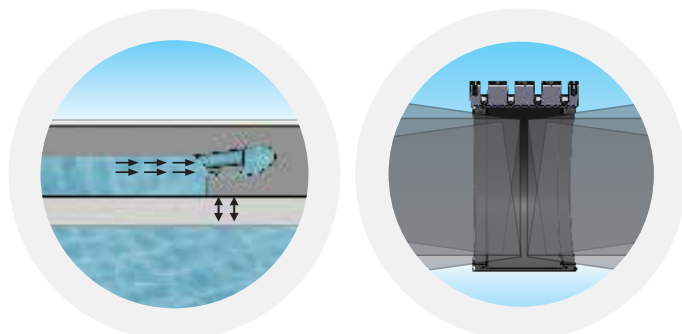
Exceptionally durable

- Stainless Steel coupling with weld-free construction.
- High quality sealing solution features two-stage sealing: mechanical sealing that is effective under non-pressure, and self-inflating gasket using water pressure.
- Perfect fit for aggressive soil conditions.
- Innovative radial closing mechanism and sealing systems eliminate installation errors.
- Monoblock design delivers fortified strength and enhanced flexibility.
- Gasket and inner plate attached with insulated bolts to prevent galvanic corrosion due to contact between the metal pipe and the Repamax.



Flexible connection

- During installation, allows for up to 3° angular deflection on each end, as well as for misaligned pipes.
- Absorbs post-installation dynamic pipe deflection of up to 3° on each end, reducing the risk of damage and cracking due to ground shifts and temperature changes.
- Adapts to out-of-round pipe shape (up to 8mm), for optimum fit on both ends.
- Patented progressive pressure-assisted gasket self-inflates as water pressure rises.



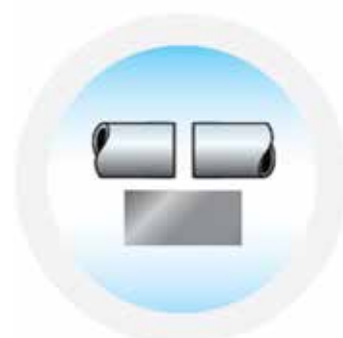
Easy to use

- Unique patented bolt holder enables one-person installation.
- Single closing mechanism up to DN700



The REPAMAX[®] stainless steel coupling can also be used for the following applications:

- Best coupling for aggressive soil conditions
- High pressure configurations
- Shear breaks
- Sleeve joint replacement
- Bell joint replacement
- Conventional section replacement for high pressure sewage pipes
- Ideal for misaligned pipes



REPAMAX[®] PRODUCT INFORMATION

Products meet standards NSF-61, NSF-372, EN 14525 AND BRL 775

All products meet or exceed standards NSF-61 and NSF-372. Range 12 and 22 products up to DN 300 were approved by 3rd party ILAC lab according to EN 14525.

Body:

- AISI 304 Stainless Steel.

Progressive Pressure-Assisted Gasket:

- EPDM compounded for water and sewerage, meets international standards for contact with drinking water:
- UBA Elastomer Guideline (KTW), W270, XP P 41-250, and BS 6920. Also meets DIN EN 681-1 for water and drainage applications.
- NBR compounded (for ranges 12mm and 22mm), meets DIN EN 682 for gas supply mains and pipeline applications.

Gasket Bridge:

- AISI 304 Stainless Steel.

Inner Plate:

- AISI 304 Stainless Steel connected with reinforced insulated bolts made from Ultem resin 1000, with insert socket set screw AISI 316.

Lugs:

- Polycarbonate for regular pressure products.
- AISI 304 Casting (ASTM A-351 CF8) for some high pressure products.

Nuts & Bolts:

- AISI 304 Stainless Steel. Rolled thread and anti-galling coating.

Dynamic Deflection:

- Up to 3° per side.

Max. Offset for Misaligned Pipe:

- Width 140mm - Up to 6mm.
- Widths 210mm and 280mm - Up to 10mm.
- Width 430mm and 580mm - Up to 10mm.

Transition Capability:

- Up to 10mm.
(change according working range and DN)

Working Range:

- 12mm range: DN40 - DN80
- 22mm range: DN80 - DN400
- 32mm range: DN150 - DN600
- 15mm range: DN650 - DN2000

PFA - Allowable Operating Pressure:

(valid for products with EPDM gasket)

Regular working pressure products:

- DN40 – DN300: 16 bar
- DN350 – DN500: 12 bar
- DN600: 11 bar

High working pressure products:

- DN40 – DN125: 24 bar
- DN150 – DN600: 16 bar
- DN650 – DN2000: For both regular and high working pressure information, please contact your local Krausz distributor. Refer to our website for contact information: www.krausz.com.

PEA - Allowable Test Pressure:

- 1.5 x Working Pressure.

Working Temperature:

- Continuous Operation:
EPDM gasket: -30°C up to +85°C
NBR gasket: -20°C up to +70°C

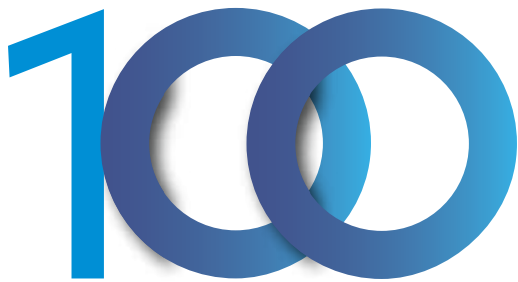
Short Time Operation:

- EPDM gasket: up to +100°C

Vacuum Test:

- 0.8 Bar.

* Data may vary according to product size and type. For complete technical information please refer to product specification sheet.



YEARS

OF INNOVATIVE PIPE JOIN AND REPAIR SOLUTIONS

Krausz Industries develops, designs, and manufactures market-leading smart products for repairing and connecting different types of pipes for potable water and sewage.

During more than 100 years of industry leadership, Krausz has earned a solid reputation for innovative, high-quality products that are exceptionally easy to use and are extremely durable; products that save significant time and cost in installation, inventory and maintenance.

With millions of installations worldwide, Krausz products expertly meet immediate connection and repair needs and prevent future pipe damage, delivering long-lasting value.

In 2018, Krausz was acquired by Mueller Water Products.

Mueller Water Products, Inc. (NYSE: MWA) is a leading manufacturer and marketer of products and services used in the transmission, distribution and measurement of water in North America. Mueller's broad product and service portfolio includes engineered valves, fire hydrants, pipe connection and repair products, metering products, leak detection, and pipe condition assessment.

Discover the Right Coupling for
your Repair and Installation Needs.
Scan the QR Code to Get Started



*For more information about us, or to view our full line of products, please visit www.krausz.com
or call Customer Service at Tel: +972 (0)3 5154000 Fax: +972 (0)3 5183293 Info@krausz.com. 1 Harav Mantzura Str. Rosh Haayin, Israel 4850001*

Mueller refers to one or more of Mueller Water Products, Inc. a Delaware corporation ("MWP"), and its subsidiaries. MWP and each of its subsidiaries are legally separate and independent entities when providing products and services. MWP does not provide products or services to third parties. MWP and each of its subsidiaries are liable only for their own acts and omissions and not those of each other. MWP brands include Mueller®, Echologics®, Hydro Gate®, Hydro-Guard®, HYMAX®, i2O®, Jones®, Krausz®, Mi.Net®, Milliken®, Pratt®, Pratt Industrial®, Sentryx™, Singer®, and U.S. Pipe Valve & Hydrant. Please see muellerwp.com/brands and www.krausz.com to learn more.

© 2024 Mueller International Holdings. All Rights Reserved. The trademarks, logos and service marks displayed in this document are the property of Mueller, its affiliates or other third parties. Products above marked with a section symbol (§) are subject to patents or patent applications. For details, visit www.mwppat.com. These products are intended for use in potable water applications. Please contact your Mueller Sales or Customer Service Representative concerning any other application(s).

BR0038 REV 3/24

